

SEXUAL HEALTH SERVICES (SHS) REFERRAL TOOLKIT

Sexual **H**ealth **E**ducation **P**rogram

Rachel Miller, Resource Teacher
rmiller@sandi.net (619) 725-7121

With support from CAI

www.connectionsforstudentsuccess.org



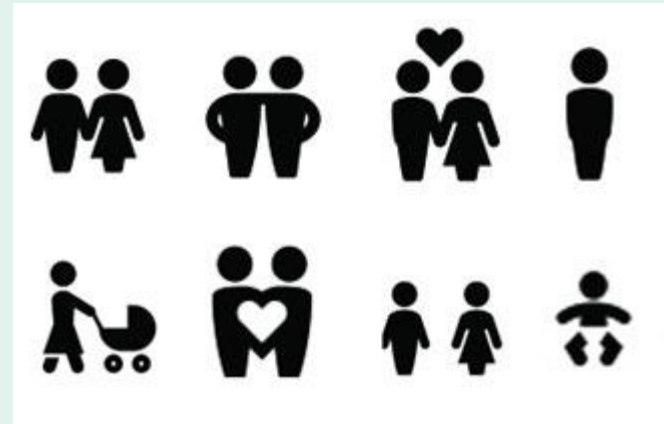
SHS REFERRAL TOOLKIT CONTENTS

1. Laws and Policies

2. Best Practices

3. SHS Tracking

4. SHS Clinic Information



SHS REFERRAL DEFINITION

A **one-on-one conversation** with a student in which you **provide information** about *off-site providers* or an *on-site school-based health center* **for sexual health services** that resulted in a *formal* or *informal* referral to one or more of those providers.



SEXUAL HEALTH SERVICES

These services include:

- HIV testing
- STD testing and treatment
- Pregnancy testing
- Provision of condoms and condom-compatible lubricants (e.g., water- or silicone-based)
- Provision of contraceptives other than condoms (e.g., birth control pill, birth control shot, IUD)
- Human papillomavirus (HPV) vaccine



SHS ACCESS POLICIES



❖ Family PACT

- Provides comprehensive family planning services to low-income Californians.
- All health centers listed in Toolkit will enroll students in Family PACT.

❖ SB-138 Confidentiality of Medical Information

- Allows a person who is covered under another person's health plan to keep their health visits and information private and confidential.
- Person requesting the confidentiality does need to notify the health plan in writing.
- See *Confidential Communications Request Form* (page 19).

CALIFORNIA MINOR CONSENT and CONFIDENTIALITY LAWS



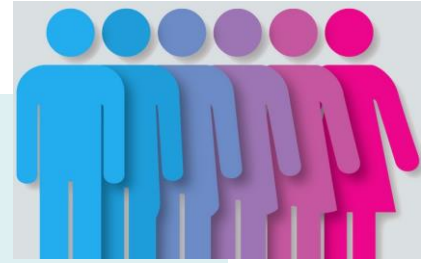
Minors of any age may receive the following services without parental consent:

- **Birth control**
- **Condoms**
- **Medical care related to pregnancy**, including abortion, but not sterilization.

Minors 12 years and older may receive the following services without parental consent:

- **STD/HIV testing and treatment**
- **HPV vaccine**





GUIDELINES FOR RELEASING STUDENTS

- **Students may be released from school for confidential care services during school hours.**
- **School Nurse and Counselor typically facilitate the referral.**
- **Attendance should mark “Detained in School Office” or “Late/Leave Early Excused.”**

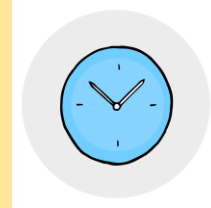
WHO SHOULD MAKE A REFERRAL?

- **Designated, trained staff**
- **All staff, via linkage to trained staff member**
- **Self-referral by student**

The text 'WHO?' is written in a bold, red, hand-drawn font with a white outline, set against a white rectangular background. The letters are slightly irregular and expressive, with a question mark at the end.

WHEN CAN A REFERRAL BE MADE?

- **Upon student request**
- **As identified during a one-on-one interaction with student**
- **Upon referral from other staff member**



WHAT STEPS ARE INVOLVED IN MAKING A REFERRAL?

- **Identify student's needs**
- **Select provider**
- **Make referral**
- **Document referral**



HOW TO MAKE A REFERRAL?



- **Build Rapport**
- **Ensure Confidentiality and Consent**
- **Identify Student Needs**
- **Select the Appropriate Service(s) and Provider(s)**
- **Make the Referral**
- **Follow-Up After the Referral**

TIPS FROM THE TRADE



- **Keep conversations positive and praise students.**
- **Ask open-ended, clarifying questions.**
- **Verify appointments.**
- **Provide follow-up support.**

SHS REFERRAL TRACKING

How do we know we are making the changes that we want to see?

- **Recognize successes and trends.**
- **Identify challenges.**
- **Brainstorm strategies.**
- **Need data** (i.e., number of referrals) to see impact.



Changes

SHS REFERRAL TRACKING LOGISTICS

- **Priority Schools only**
- **SHS Referral Log**
 - Adapt as needed
 - To count SHS Referrals

| Month | Number of Referrals |
|-----------|---------------------|
| August | |
| September | |
| October | |

- **Online Tracking Form**
 - Sent monthly by Nursing and Wellness
 - Guides our programming

RECOMMENDED HEALTH CENTERS

- **Title X health clinics**
- **School-Based Health Centers**
- **San Diego County HHSA**
- **Hospitals**
- **Other community service providers**



SHS YOUTH-FRIENDLY CLINICS

- **Established partnerships**
- **Best practices working with youth:**
 - Provide no or low cost services
 - Honor confidentiality laws
 - Follow evidence-based clinical recommendations
 - LGBTQ inclusive



SHS ACCESS ONLINE



STUDENT RESOURCES



TIPS...

FOR YOUTH:

- **KNOW** your health rights and **USE** your health rights! **REFER** to this card when you visit your health care provider.

FOR PROVIDERS:

- Help youth understand consent and confidentiality at the beginning of each visit.
- A youth is more likely to disclose sensitive information when he/she has time alone with the provider to discuss concerns.
- Even when the youth presents with a non-sensitive issue such as a headache, there may be underlying issues (ex. need for an STI screening) which may only surface if the youth is provided with confidential care.
- In most cases, for services under minor consent, access to a minor's records is only allowed with written consent of the minor.

*This card does not constitute legal advice or representation. Please visit www.sandiegoyouth.org for more information. For additional copies of this card, please visit www.ahwg.net or call 415.334.6428.
Reprint: from National Center for Youth Law Network.
www.nylnet.org Revised 6/2011*

California Minor Consent Laws

This card provides a snapshot of CA laws. For more information please visit www.sandiegoyouth.org

Printing sponsored by the San Francisco Department of Public Health
Adolescent Health Working Group, 2011
www.ahwg.net

STAFF RESOURCES

- **Please access this PowerPoint and other resources on our program's website:**
 - www.sandi.net/depts/sex_ed
 - → Staff Resources
 - → Teacher and Staff Resources (login)
 - → Confidential Medical Care

OUT FOR SAFE SCHOOLS BADGE



San Diego Unified
SCHOOL DISTRICT

OUT
FOR
SAFE SCHOOLS

